



**WINDOORS**  
INTERNATIONAL LTD.

ISO 9001:2015 ; ISO 14001:2015 & ISO 45001:2018  
NSIC - CRISIL RATING SE-1A



**Clean Room Systems**

**Walls**

**Ceiling**

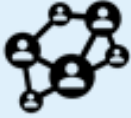
**Doors**



**WINDOORS**  
INTERNATIONAL LTD.  
ISO 9001:2015 ; ISO 14001:2015 & ISO 45001:2018  
NSIC - CRISIL RATING SE-1A

Since 1965 we have strived for excellence and highest quality.

At Windoors International Limited, we have gone over and above to meet the highest standards expected by the market. Our Journey shows that despite the humblest of beginnings we always aim to strive for more



More than 50 years of Experience



Serving over 1200 Corporate Clients



Highest quality products and customer satisfaction

# CERTIFICATES



CRISIL SE-1A Rating



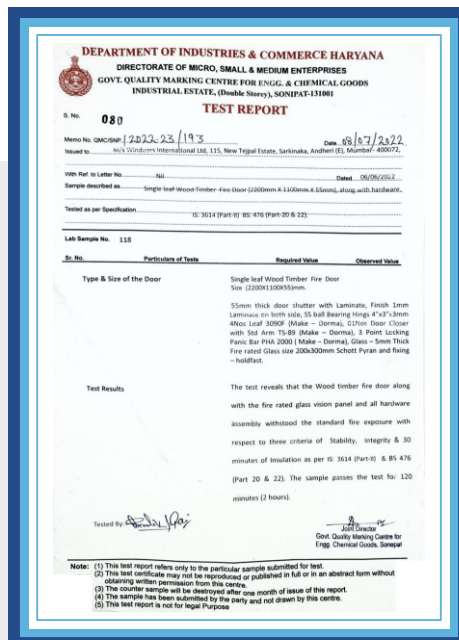
ISO 9001:2015



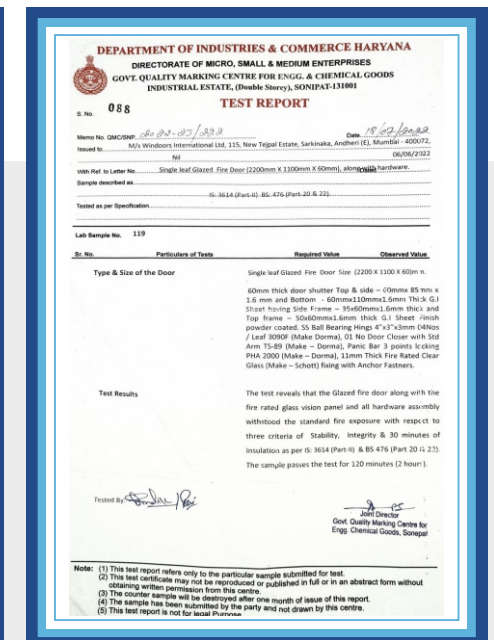
IGBC Membership



Metal Fire Door Certificate



Wood Fire Door Certificate



Glaze Fire Door Certificate



Laser Cutting Machine



CNC Press Brake



Hydraulic Shearing Machine



25HP Air Compressor



Hot Press Machine



Hydraulic Cold Press



PUF Machine



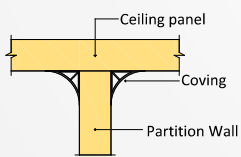
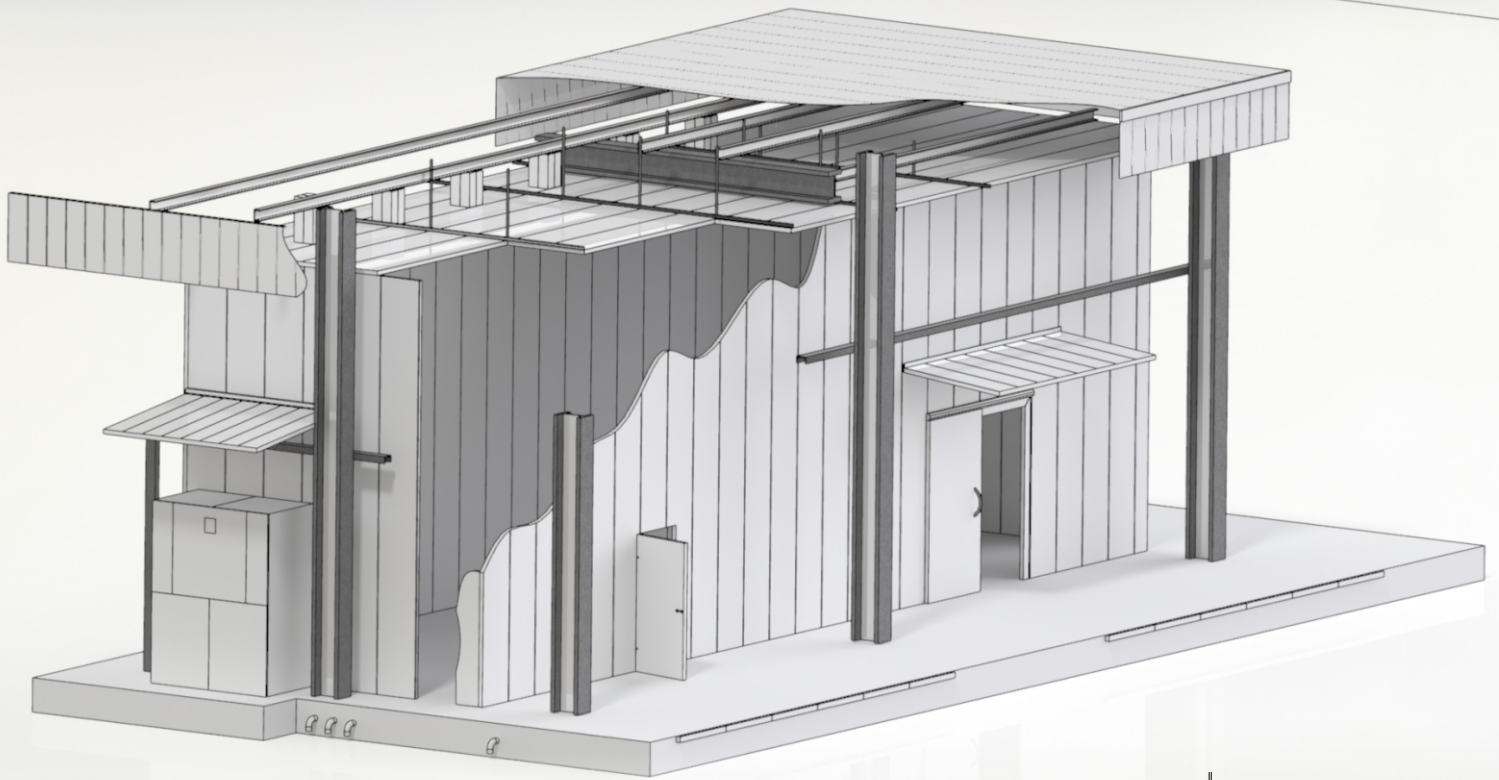
Powder Spraying



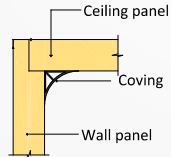
Thickness Planer



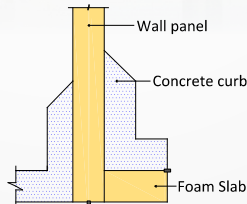
Automated Conveyerised Powder Coating Plant



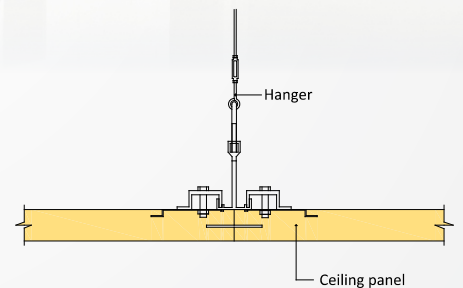
**PARTITION WALL TO CEILING**



**WALL TO CEILING**



**WALL TO FLOOR**



**CEILING SUSPENSION**

### Versatility:

Our modular cleanrooms can be readily assembled, disassembled, and relocated, often in just a few days or less.

### Cost-effective:

Modular cleanrooms are designed and manufactured offsite for a fraction of the cost of permanent construction.

### Reduced downtime:

Modular cleanroom installation causes far less disruption to daily operations, allowing users to keep some or all operations running without disruption.

### R.O.I.:

Because it can be taken down, moved, and re-erected, a modular cleanroom is considered a piece of capital equipment and can be treated as such for taxation purpose

### Easily reconfigurable:

The layout of a modular cleanroom can be rearranged, expanded, retrofit, and/or upgraded.

### Time Saving:

Modular cleanroom systems can be installed onsite in a fraction of the time as permanent construction.

### Leasing:

If you lease your space, the modular option allows you to uninstall the clean room and move it if your operation changes locations.

### Cleanliness:

A modular cleanroom is the better requirements above ISO 6 classification. The materials used in these systems do not shed like drywall or metal studs, reducing the level of contamination..



## Wall Systems

**Windoors Clean Room Wall Systems** are designed to be a progressive build System, providing quick assembly and light joint lines achieving a fully flush finish.

Our Wall Systems prioritize finishing and lower installation times to provide an excellent quality end result.

### SPECIFICATIONS

Standard size : 1200 x 3000 mm  
(up to 6000 mm Height.)

MOC : GI Pre-Coated / GI powder-coated /  
SS-304/PVC Laminate

Thickness : 0.6 / 0.8 / 1 mm

Skin Type : GPSP / SS 304 Sheet

Panel Thickness : 50 / 80 / 100 / 150 mm

Fastened to extruded aluminium / GI profiles

Infill : PUF (40kg/m<sup>3</sup>) / Rockwool (96kg/m<sup>3</sup>)  
(Other In-Fill options available on request)

Factory - made and site - made cutouts as per  
Design.

In-built power sockets and Magnehelic gauges.

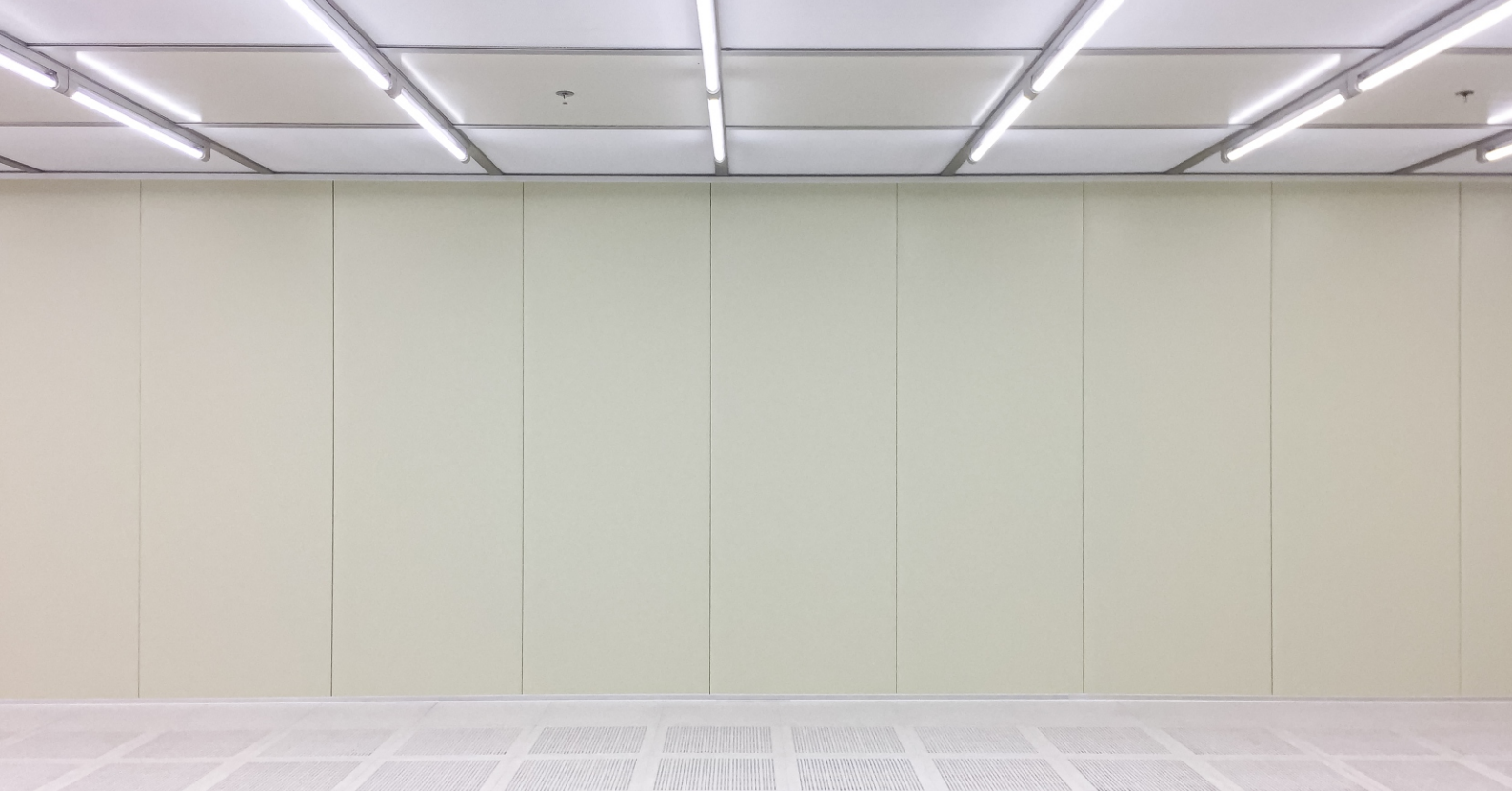
In-built Return Air Riser.



Customizable skin types and Powder  
Coating color Options available as per  
Requirement

High Quality Engineering that focuses on  
long life and high performance

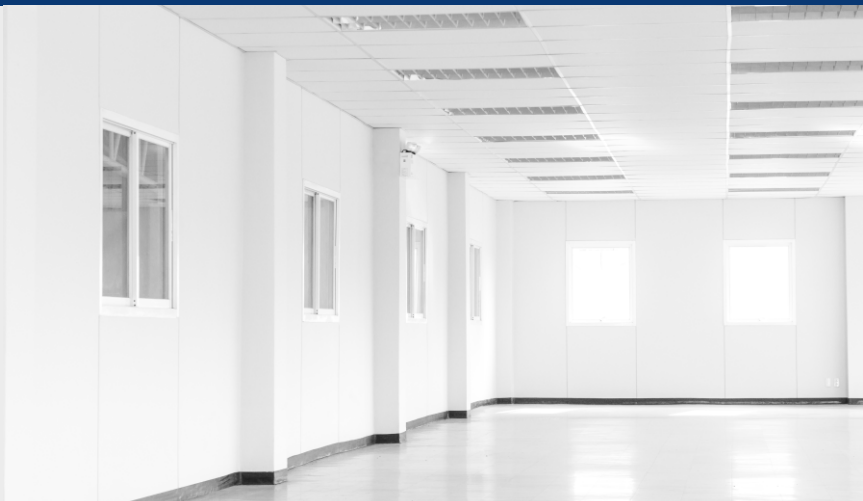
Best in Class Hardware Options available as  
per Client Requirement



## Ceiling Systems

An Important Element Of the Clean Room, Windoors Ceiling Systems are designed to be the best in class, working in perfect coordination with the entire eco system of the Clean Room.

Working together with other parts of the Clean Room, the Windoors Ceiling Systems ties the whole thing together.



### SPECIFICATIONS

Standard size : 1200 x 3000 mm  
(up to 6000 mm Length)

MOC : GI Pre-Coated / GI powder-coated /  
SS-304 / PVC Laminate

Thickness : 0.6 / 0.8 / 1 mm

Skin Type : GPSP / SS 304 Sheet

Panel Thickness : 50 / 80 mm

Factory-made Cut-outs (For Filter & Light  
Fixtures and other Services)

Infill : PUF (40kg/m<sup>3</sup>) / Rockwool (96kg/m<sup>3</sup>)  
(Other In-Fill options available on request)

Ceiling suspensions

Best in Class Lighting Options available as  
per Client Requirement

Customizable skin types and Powder  
Coating color Options available as per  
Requirement

High Quality Engineering that focuses on  
long life and high performance

# Metal Fire Doors

## Features

### Materials options

- Galvanised
- Stainless Steel
- Aluminium

### Fire Rating

60 & 120 Minutes as per BS 476 & IS 3614 Part II

Powder Coated Colour Options

Variety of Hardware options

Factory Fitted Hardware

Fully Flush Finish

## Technical Specifications

### Door Frame

Single or Double Rebate  
Sheet Thickness - 1.20/1.60/2.0mm

### Shutter - 46mm

Sheet Thickness - 0.60/0.80/1.0mm

Infill Materials - Mineral Wool  
Honeycomb  
Rockwool

Seam Lock Joints no welds

Stiffeners as per Requirement

Top and Bottom Stile Edges

Fire Retardant Gaskets & Intumescent Strip to resist smoke and fire

Vision Panels with Fire Glass



120 Min  
Fire Rating



Key Element  
of Preventing  
the Spread of  
Fire



Saves Lives by  
allowing rescue  
services  
more time



Certified by  
The Top  
agencies





# WINDOORS INTERNATIONAL LTD.

ISO 9001:2015 ; ISO 14001:2015 & ISO 45001:2018  
NSIC - CRISIL RATING SE-1A

## Factory:

Unit 1: Survey No. 16/1, 16/3, & 12/8, Near Paramount Hotel, Nashik Road (Nh3), Kasane Village, Thane - 421 302.  
Unit 2: 134, Daman Ganga Industrial Park II, Near GIDC, Vapi, Gujarat - 396193.

**Office:** 115, New Tejpal Industrial Estate, Andheri-Kurla Road, Sakinaka, Mumbai - 400 072.

**T** +91 98209 27229, 2851 0051, 2851 7122  
**E** [dd@windoorstltd.com](mailto:dd@windoorstltd.com)  
**w** [www.windoorstltd.com](http://www.windoorstltd.com)